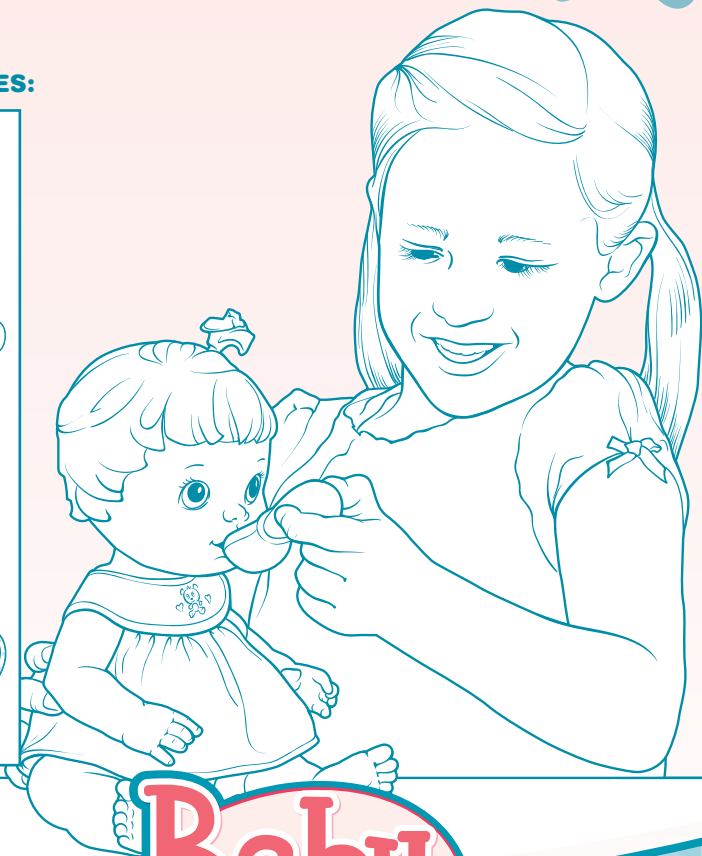
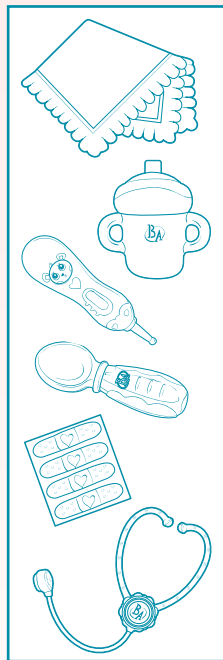


**Thank you for purchasing  
this Baby Alive® doll.  
Please read instructions  
carefully.**



**ALSO INCLUDES:**



**Baby  
Alive®**

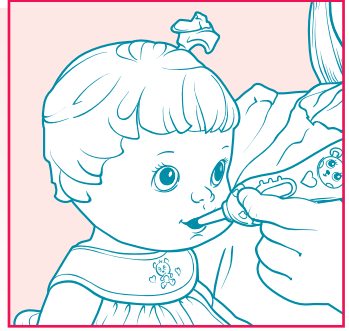
**Better Now Baby™**

## TO PLAY

### Thermometer



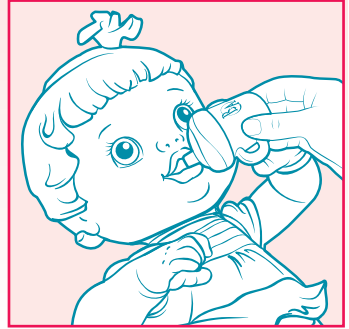
Insert the “thermometer” into your doll’s mouth. It will show you that she has a “fever.”



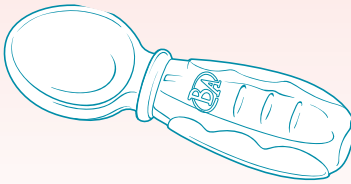
### Sippy Cup



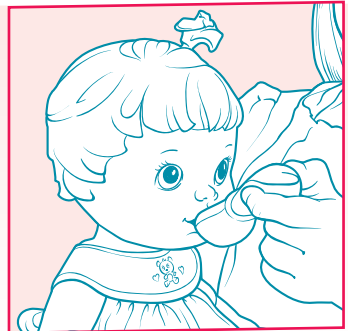
Please see feeding instructions on next page.



### Medicine Spoon

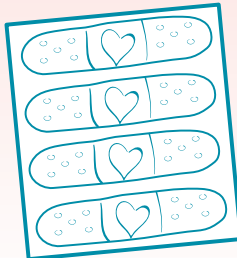


Tilt the spoon downward and the “medicine” disappears.



### Bandage Stickers

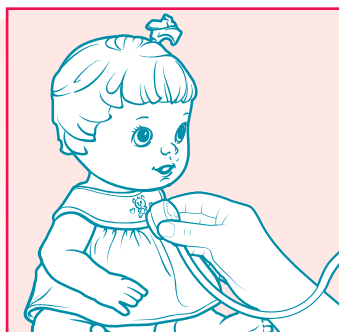
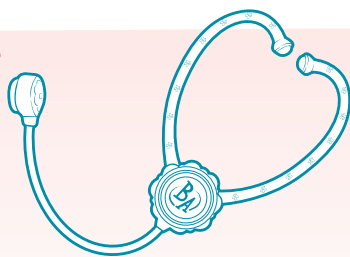
Bandage your doll’s pretend boo-boos.  
**NOTE:** Stickers are intended for use on doll only.



## Stethoscope

Use the “stethoscope” to pretend to listen to your doll’s heartbeat.

**NOTE:** Although you may wear the toy stethoscope, you will not hear anything through its earplugs.



## MEAL TIME

Make sure your doll is wearing a securely fastened diaper, before feeding her.



### To feed your doll:

1. Fill her sippy cup with clean, cold water or add a packet of Baby Alive® doll juice mix (sold separately) to the water.
2. Replace sippy cup cap.
3. Hold your doll in a reclining position. Make sure that her head is higher than her tummy.
4. Place sippy cup securely in doll’s mouth. Tip sippy cup up and give doll a few sips at a time.



## Important feeding guidelines

- Use only cold water or Baby Alive® doll juice (sold separately). Never feed doll real juice or other beverages.
- Do not feed her Baby Alive® doll food; it is not designed for this doll.
- Do not feed doll more than one sippy cup of water or doll juice (sold separately) between diaper changes.

## Diaper time

After you give your doll a drink, you'll need to change her diaper. Wipe her clean with a soft, damp cloth or paper towel, then put on a new diaper. **Always** change your doll's diaper and clean her after she drinks; **never** let her sit with a wet diaper. Discard wet diapers; they cannot be washed or reused.

## Important cleaning instructions

It is important to rinse doll clean immediately after each use. If using doll juice (sold separately) and any juice remains in the doll, it can become difficult to clean.

- To clean doll after feeding her doll juice, give her a sippy cup full of water until any remaining juice has been rinsed away and the water runs clear (it's best to do this over a sink).



Use a soft cloth or paper towel to wipe away any juice on doll's mouth. Allow doll to dry.

- **STAIN ADVISEMENT:** Baby Alive® doll juice (sold separately) may stain some surfaces. Adult supervision recommended. If spilled, wash with soap and water.
- Clean doll's face and body by wiping gently with a soft, damp cloth.
- Do not submerge doll in water; it is not intended for bath-time play.
- Do not place any foreign objects in doll's mouth or any other opening.
- Doll's t-shirt is not machine-washable. It can be spot-cleaned with a cool damp cloth or hand washed; hang to dry.
- Hand-wash sippy cup with mild dish soap and water; it is not dishwasher-safe.

Product and colors may vary.  
© 2009 Hasbro. All Rights Reserved.  
TM & ® denote U.S. Trademarks.

19270/192670001 Asst.  
19271/192680001 Asst.  
PN 6979570000



Questions? Call 1-800-327-8264